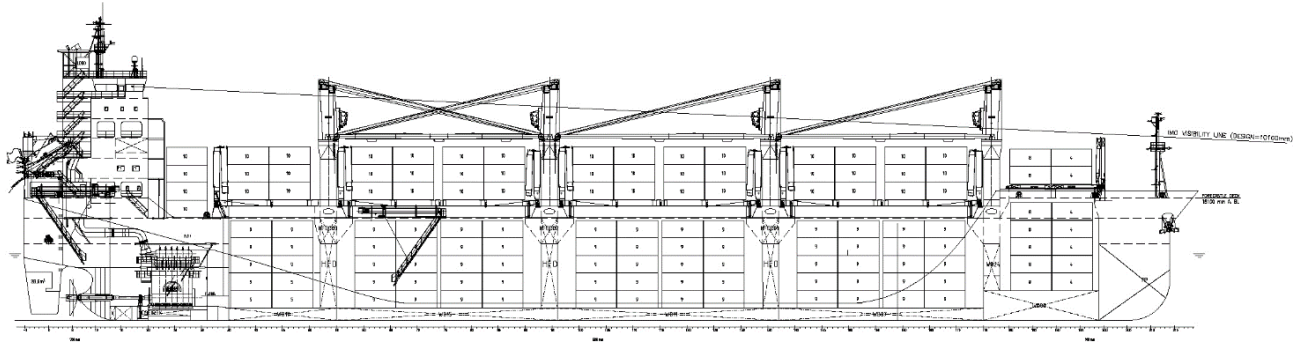




## ATLANTIC RO-RO CARRIERS, INC.

One Evertrust Plaza, Suite 1104, Jersey City, NJ 07302  
Tel: 201.356.2300 Fax: 201.356.2299 e-mail: info@arrcm.com

### VESSEL DESCRIPTION



**Name: MV “Atlantic Spirit II”**

Type: Multi-Purpose Dry Cargo Ship, Equipped for Carriage of Containers,

Registered Owners: MAGELANOS MARITIME CORP. MARSHALL ISLANDS

Technical Operator: MARLOW SHIP MANAGEMENT DEUTSCHLAND GMBH & CO. KG

Hull & Machinery: Norwegian Hull Club (via Dohle Assekuranzkontor) ; P&I: Steamship Mutual

CLASS: DNV

Yard: Zhejiang Ouhua Shipyard China

Built: 2012

Flag: Marshall Islands

Port of Registry: Majuro

IMO- No.: 9594509

Official – No.: 10610

Call Sign: V7A7143

Classification GL +100 A5 E1 Multipurpose dry cargo ship BWM Equipped for carriage of containers

DBC SOLASII2, Reg.19 G IW NAV-O Strengthened for heavy cargo +MC E1 AUT EP-D

Ice class GL E1

#### Vessel Dimensions:

LOA 179.50 m

LBP 169.00 m

Beam 28.00 m

Depth 15.10 m

Draft summer,  
freeboard 10.80 m

Draft design 10.00 m

#### Deadweight:

Summer 33271 mts on draft 10.8 m

Winter 32255 mts on draft 10.6 m

Tropical 34291 mts on draft 11.1 m

Fresh 34364 mts on draft 11.1 m





## ATLANTIC RO-RO CARRIERS, INC.

One Evertrust Plaza, Suite 1104, Jersey City, NJ 07302  
Tel: 201.356.2300 Fax: 201.356.2299 e-mail: info@arrcm.com

Tonnage International 22.863 GT / 10.602 NT  
Tonnage Suez 23.356,82 GT / 21.969,70 NT  
Tonnage Panama 19.050,00 NT

Container capacity: 20 FT / 40 FT  
Deck: 484 / 218  
Hold: 674 / 327  
Total: 1158 / 545

Vessel's container intake is always subject to vessel's stability / trim / deadweight /permissible stack weights / lashing forces and subject to regulations of visibility.

Cargo Volume: 39,042 cbm (without Tween Decks)  
36,522 cbm (with Tween Decks)

Main engine: Licencor MAN B&W, Copenhagen  
Licensee/Maker STX, Korea  
Type 1 x 6S50 MC-C7  
Output MCR 8.800 KW

Diesel generators: Maker MAN B&W  
Type 2 x 6L 16/24  
Output 1 x 502 kWel at 1.000 rpm 50 hz  
Type 1 x 5L 16/24  
Output 1 x 418 kWel at 1.000 rpm 50 hz

Cranes Maker MacGregor-Hägglunds  
Number + Type 4 electro hydraulic single deck crane  
SWL 60 mto  
Outreach SWL 60mts - 20 mtrs  
Outreach SWL 50mts - 24 mtrs  
Outreach SWL 40mts - 30 mtrs

Combinable above hatch 2/3/4 to 110 mts by means of a traverse beam location center, with offset to port side  
In case cranes are working constantly for 24 hours owners have the option to carry out maintenance work thereafter.

### Cargo Holds:

Hold	Cubic w/o TWD	cubic with TWD in lower position	Hatchsize (L X B)
1	3.255	3.242	12.6m x 20.04m / 10.19m
2	10.551	9.733	25.6m x 24.4m
3	10.551	9.733	25.6m x 24.4m
4	10.551	9.733	25.6m x 24.4m
5	4.155	4.155	12.8m x 24.4m
Total	39.063	36.609	





# ATLANTIC RO-RO CARRIERS, INC.

One Evertrust Plaza, Suite 1104, Jersey City, NJ 07302  
Tel: 201.356.2300 Fax: 201.356.2299 e-mail: info@arrcm.com

## Tanktop sizes:

	Tweendeck in holds 2/3/4	Bottom Sizes (L x B)
hold 1:	227 sqm	7.8/6.9 m x 20.1/10.2 m
hold 2:	742 sqm	30.4 m x 24.4 m
hold 3:	742 sqm	30.4 m x 24.4 m
hold 4:	742 sqm	30.4 m x 24.4 m
hold 5:	197 sqm + 135 sqm (monkey rocks)	13.6 m x 14.5 m (24.4 m)
<hr/>		
Total:	2,650 sqm + 135 sqm (MR)	
=	2,785 sqm tank	

Clear height in Hold: 14,85 meters

Tanktop strength 20 mts/sqm  
except on monkey rocks in hold 5 where it is 12 mts/sqm and 4 mts/sqm on racks when they are stored in hold 5

## Hatch covers:

hydraulic folding type hatchcovers covers  
always one panel folding upright forward and aft Hatch Cover Sizes (L x B)

hold 1	206 sqm	6.9/6.1 m x 20.5/10.6 m
hold 2-4	2.067 sqm	29.1 m x 26.5 m (each)
hold 5	352 sqm	13.3 m x 26.5 m
Total:	2.625 sqm	

fixed container fittings flush type  
container stack weights: 60 mts per 20ft stack on hatches 2-5 /  
28 mts on hatch 1  
90 mts per 40ft stack on hatches 2-5 /  
56 mts on hatch 1  
70 mts per 20ft stack on deck in front of wheelhouse

Hatch cover strength 4 mts/sqm

## Tweendeck

Tweendeck in holds 2/3/4  
Tweendeck strength 4 mts/sqm  
Tweendeck height 2 times , 2 layers or 3 layers of 8'6" containers  
Tween deck Principle TD panels outside and aft resting on titable foundations at side wall  
TD panels inside (at cl) resting on movable supporting racks  
One, two, three or all five TD panels continuously laid out from aft to fwd.  
a. m. TD panels laid out one or both sides  
TD supporting racks to be free of horizontal lashing and cargo forces  
Holds equipped with lashing eyes to assist in withdrawing cargo from racks





## ATLANTIC RO-RO CARRIERS, INC.

One Evertrust Plaza, Suite 1104, Jersey City, NJ 07302  
Tel: 201.356.2300 Fax: 201.356.2299 e-mail: info@arrcm.com

Tweendeckpanels	Panel Weight	23 mt unitweight
	Panel Volume	63 cbm per unit
Tween Deck Racks in 2 x 8.5' tiers height or altern.	Rack Weight	3,7 mts unitweight
	Rack Volume	187 cbm per hold with 10 racks installed
Tween Deck Racks in 3 x 8.5' tiers height	Rack Weight	3,7 mts unitweight
	Rack Volume	269 cbm per hold with 15 racks installed

Navigation/ Fitted with all modern nautical aids /satellite navigation /  
Communication: weather-chart recorder / Inmarsatsystem / GMDSS / SAT F

All details and figures are about, except fuel specifications, and are believed to be correct.

